

## Our Technology Key Strengths

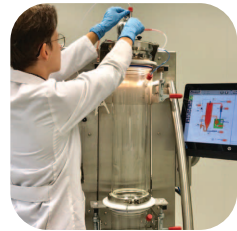
### Small Scale :

Our equipment range can process batches from 10mg up to 5000g. Within the same machine several batch capacities are possible for scale-up studies.



### High precision & reproducibility :

All process critical parameters (PCP) can be measured and controlled. Excel batch reporting offers an easy analysis of process robustness and repeatability for QbD. All probes and instruments are calibrated to a very high standard.



### Transparency :

Plexi housing and glass process vessels offer excellent process visibility for the operator.

### Modularity and flexibility :

The modular design offers all necessary set-up flexibility and allows good accessibility for cleaning and inspection as well as later plug & play upgrades.

### Containment & safety :

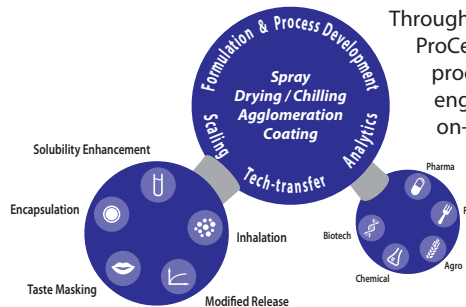
The unique mechanical and process set-up creates all possibilities to process in different containment levels for toxic applications. Water as well as organic solvents can be processed.



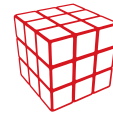
### Qualification :

GMP/GAMP/CLINICAL: a complete qualification file (IQ, OQ, SQ) is available. All product contact parts can be quickly disassembled and disposed or cleaned thoroughly. Machines can be used for Clinical Trials.

## Feasibility Lab & Contract Services



Through years of experience, ProCepT has become a process expert in particle engineering. Through our on-site sister company Xedev, we also offer contract services to our customers.



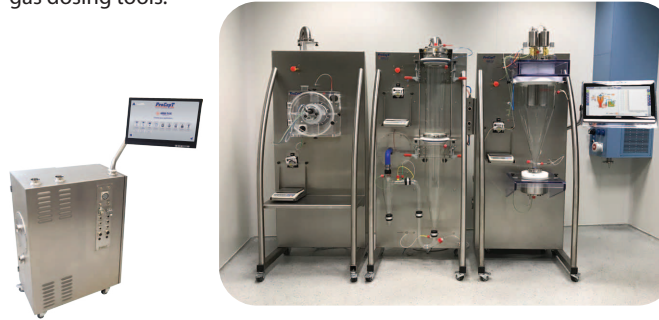
# 4M8-TriX

Formatrix

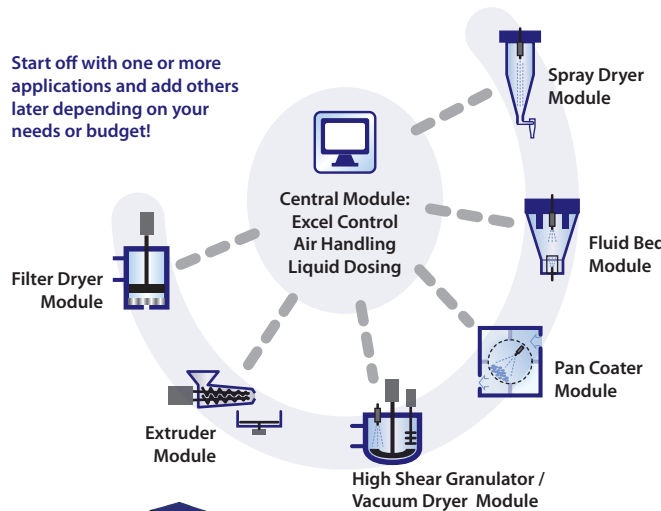
## Modular R&D Equipment

Save on total investment

Combine **multiple processing units** with a single **central control** system, **central air handling** and auxiliary equipment like liquid and gas dosing tools.



Start off with one or more applications and add others later depending on your needs or budget!



Matrix combinations based on budget, application, infrastructure

## Guaranteed successful SCALE-UP by QbD

Exact simulation of pilot & production scale process conditions  
Accurate process data measured, controlled & reported  
Maximum process understanding with Minimum product

## Process Equipment



Fluid Bed Drying / Coating / Agglomeration  
50 - 1500 g

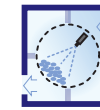


High Shear Granulation  
15 - 1000 g

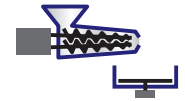


High Shear Granulation Vacuum Drying  
15 - 1000 g

## Formulation Development



Perforated Drum Tablet Capsule Coating  
50 - 6000 g



Twin Screw Extrusion / Spheronisation  
25 - 250 g

## API Drying Development



Spray Drying / Congealing / Prilling  
0,2 - 8000 ml



Agitated Vacuum Drying  
50 - 4000 ml



Agitated Vacuum Nutsche Filter Drying  
1 - 5 litres

4M8-TriX saves you

30-50% on total investment...

## Who we are

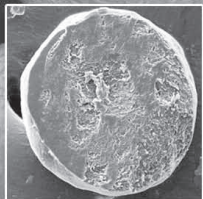
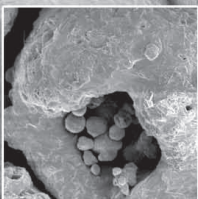
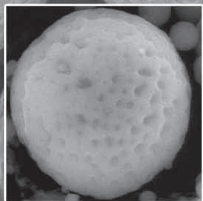
ProCepT is a Process Equipment manufacturer and Service provider in R&D Drying, Coating, Melting and Agglomeration processes.

With 25 years expertise in engineering, manufacturing and applying our process development technologies, we've build up many references in Pharma, Biotech, Fine Chemical, Nutraceuticals and Food. More than 500 units have been supplied worldwide.

Our engineering concept is based on Modularity, Visibility, Accuracy and Qualification.

## ProCepT equipment to engineer your particle

Drying  
Coating  
Melting  
Agglomeration



**ProCepT**  
Particle Processing Equipment

*Our Mission:*

**REDUCE and OPTIMISE  
YOUR R&D COSTS  
in particle processing**

**R&D Particle  
Processing Equipment  
& Contract Services**

### ProCepT nv

Industriepark Rosteyne 4  
9060 Zelzate, Belgium  
Tel. +32 9 342 23 23  
sales@procept.be  
www.procept.be



[www.procept.be](http://www.procept.be)